



Part of the Meilleurs Terroirs range

Sancerre Cuvée du Connétable Dry white - 2016

Mineral and complex

« A tribute to Louis de Sancerre »

Louis de Sancerre is one of the great men of France's history: he was at once a companion in arms of Du Guesclin and a friend of King Charles V. In recognition of his merit and talent, he was appointed Marshal of France in 1368 and then Constable in 1397. This wine pays homage to this emblematic figure of the town of Sancerre. It boasts a strong personality, along the lines of the Constable: lively, frank, refined and complex.

Vine-growing and winemaking

Grape variety: Sauvignon

Soils/Terroirs: Chiefly clay and flint stone/ flint stone and chalky clay


Vinification details: The juices are selected according to their freshness, fruit and complexity and then thinned by settling, in view of obtaining plenty of finesse and tension. They are then placed in barrels for fermentation purposes. Slightly toasted staves are used to maintain the balance between the oak and the wine. Stirring is under taken during the maturing phase to bring about roundness. The wine is then aged for a year following the final blend.


Maturing period: 18 months

The vineyard

Our vineyard is situated in several districts within the appellation area: Sancerre, Bué, Crézancy, Chauvenay and Ménétreol. The three terroirs characterizing the Sancerre appellation are represented: white soils, flint stone and limestone. Cuvée du Connétable is derived from a selection of Sauvignon, harvested from the best parcels at Château de Sancerre. The terroir is essentially made up of flint stone from the district of Sancerre, which provides freshness and vivacity.

Tasting notes

Color 
Limpid and brilliant
Golden color with golden tints

Aromas 
Refined and complex.
Toasted and vanilla notes with a hint of fresh almond and iodized fragrances with notes of aniseed and fresh apricot.

On the palate 
Lively, frank, fresh
and lemon-flavored attack.
Followed by a fleshy, rich and full
palate, counterbalanced by heaps
of minerality. Tasty finish with notes
of truffle.

Food pairing

Sea food, white meat, white
fleshed fish, goat's cheese.

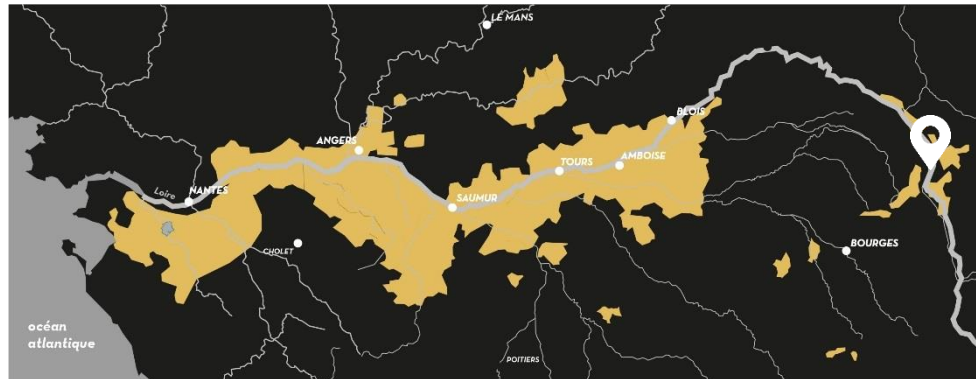
Serving temperature:
Between 14 to 16°C
Decant at least one hour
before tasting.



Meilleurs Terroirs, where Great Wines are born ...

Comprising many exceptional castles, the Loire Valley is also called the Valley of the Kings. It was the crucible of France's art of living and power, and is without a doubt the cradle of high quality wines. Meilleurs Terroirs is the portfolio of brands, specializing in great wines derived from the region's most well-known terroirs. Such as Chateau de Sancerre, Chateau la Varière, Domaine de la Perruche... exceptional wines from great chateaux and estates, which have built the reputation of our finest appellations.

Loire Valley wines flourish in a **unique cultural landscape**, classified as a UNESCO World Heritage site. The Loire Valley vineyard extends over 65,000 hectares within 4 regions – Pays Nantais, Anjou-Saumur, Touraine and Centre Loire. All and all, this wine route represents a distance of 800 km.



"The Loire Valley is France's 3rd largest winegrowing region. Stretching from the Atlantic coast to the Centre region, it is a point of equilibrium, where north meets south, sophistication meets freshness, art meets literature, and tradition meets modernity. These harmonious contrasts - plus the generally temperate climate and extraordinarily varied terroirs - have produced the world's most diverse array of wines. As a result, France's longest river is capable of providing a rich selection of over 50 still and sparkling AOP and PGI wines and over 10 varieties (Chenin, Sauvignon, Chardonnay, Melon de Bourgogne, Cabernet Franc...). All of the wines are in the nature of the Loire Valley."

About Chateau de Sancerre « A moment suspended by the beauty of our senses »

Situated at the very heart of the town with the same name, Chateau de Sancerre is one of the few French chateaux called after an appellation. The history of the estate has marked the area, especially thanks to Louis de Sancerre, at once Constable and Marshal of France (1342-1402). As of 1919, the property's vineyard grew and currently represents 55 hectares. Chateau de Sancerre's wines are vinified, matured and bottled on-site. The diversity of the parcels, comprising white soils, flint stone and limestone is perfectly well mastered in view of adapting the vine-growing to each terroir. The art of blending is carefully undertaken in keeping with Louis de Sancerre's motto - "Overtake the very best". Our Sancerre wines are renowned worldwide and satisfy the finest connoisseurs.

Refined – Rare – Elitist

